

# W E L C O M E



THE BARTON  
A U S T I N , T E X A S

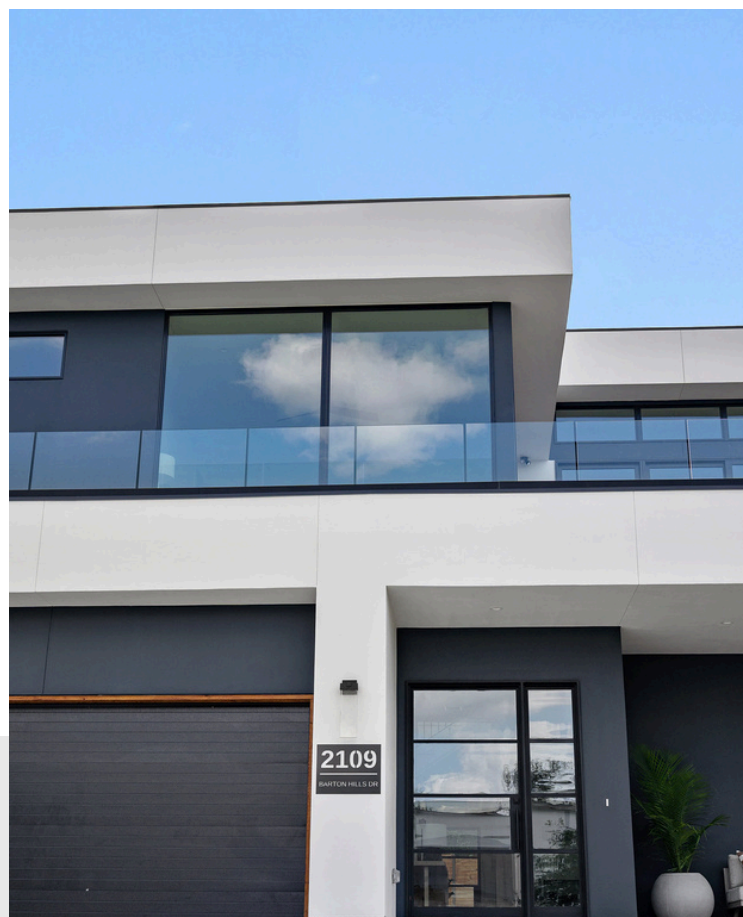
TO YOUR HOME AWAY FROM HOME

---

2109 BARTON HILLS DRIVE, AUSTIN, TEXAS 78704

# Welcome

TO A WORLD  
OF COMFORT  
AND  
ELEGANCE



Thank you for choosing to stay with us! We are excited to welcome you to The Barton.

We invite you to browse through our welcome book, where you can find all the information about the house and about our favorite local places to visit!

If you have any questions or need anything at all during your stay please don't hesitate to call or text: 512.699.2389.

Welcome to Austin!

Enjoy your stay!

*Sugak High*

# The Barton

## ABOUT US



**THE BARTON** is located in the heart of the Barton Hills Neighborhood of Austin, Texas bordered by Zilker Park, the Greenbelt, and Barton Springs.

This home was dreamt and developed by Colby Harmon, a Central Texas native who loves all things real estate and track related. He imagined sharing a beautiful luxury short-term home experience in one of Austin's most iconic neighborhoods.

We hope you enjoy this great city and all that it has to offer!



# CONTENTS

- 01 WIFI INFORMATION
- 02 CHECK-IN DETAILS
- 03 HOUSE RULES
- 04 POOL & SPA
- 05 HOME GUIDE
- 06 GETTING AROUND
- 07 CHECK-OUT DETAILS
- 08 EMERGENCY





WIFI CODE

# CONNECT TO WIFI



WIFI NAME

*2109 Barton Hills*



PASSWORD

*runfastswimfast*



Don't miss our Location  
Recommendations

01



# CHECK-IN

---

Check-in is from 3pm | Check out is at 10am

## DIRECTIONS & PARKING

### Parking:

There is an attached two-car garage and ample street parking along Barhill Road.

### Parking Spots:

Please do not park on Barton Hills Drive.

**Additional notes:** Check in time is any time after 3pm. Please communicate with us if you are going to arrive earlier and we may be able to accommodate you.

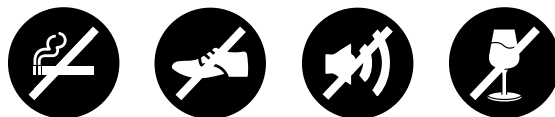
02

# HOUSE RULES

---



- Guest authorization: Only the number of guests confirmed on the booking are allowed.
- No smoking: This includes the use of tobacco, cannabis, e-cigarettes, etc.
- Cleanliness: Please treat this like your own home!
- Checkout time: Guests should complete checkout by the designated checkout time.
- Key return/Security: Please lock all doors. Please leave the keys in the lockbox on the front door.





# WE ARE DOG FRIENDLY!

---

## ENJOY THE BARTON WITH YOUR FURRY FRIEND!

Please let us know before your stay if you are bringing a dog with you so we can make the necessary arrangements.

We ask that you please clean up after your pet. (*Note: it is better if they do their business on the grass rather than on the turf.*) There are pet waste bags under the kitchen sink. We also ask that, as much as possible, pups stay in areas with tile, concrete, or rugs in the house.

Lots of dog activities -- just down the road, Zilker park has a very large off-leash dog area and the Greenbelt\* is a fabulous place for a dog-led hike.

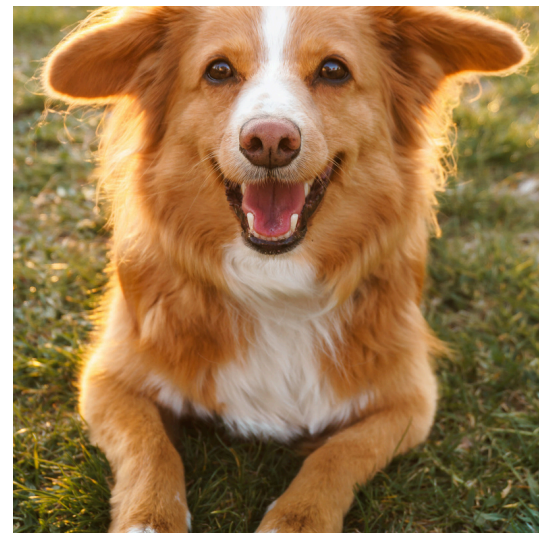
\*Watch for water levels before letting your pets drink from the greenbelt streams -- too little rain can lead to a sick doggie.

## VET CLINICS

Here is one of the nearest vet clinics in the area:

Bluebonnet Animal Hospital

2414-B S. Lamar  
Austin, TX 78704  
512.441.3192



# POOL & SPA RULES

---

**POOL DEPTH IS 3 ft. to 6 ft.**

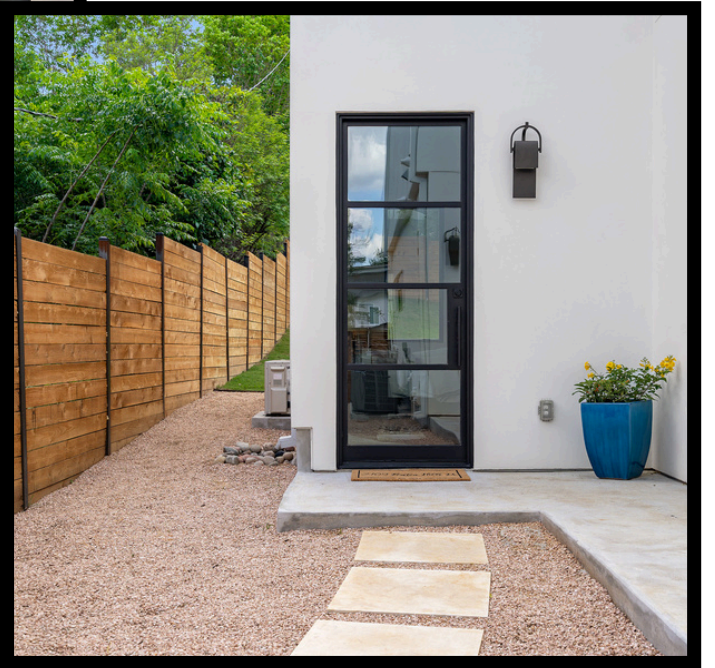
- **SWIM AT YOUR OWN RISK - THERE IS NO LIFEGUARD ON DUTY**
- **ADULT SUPERVISION MUST BE PROVIDED FOR CHILDREN AT ALL TIMES**
- **NO DIVING**
- **NO RUNNING**
- **NO GLASS IN THE POOL OR SPA AREA**
- **NO LOUD MUSIC**
- **NO PETS IN THE POOL**
- **QUIET HOURS BEGIN AT 10PM. PLEASE RESPECT THE NEIGHBORS.**

04



**In case of emergency, call 911  
2109 Barton Hills Drive Austin, Texas 78704  
(Corner of Barhill & Barton Hills Drive)**





*The  
Barton*



# HOME GUIDE

---

## THERMOSTAT

The downstairs thermostat is located beside the kitchen wall. The upstairs thermostat is located in the upstairs hallway. They are usually kept at 74 degrees on Auto function.

Click on the Mode button to change it between Cool/Heat/Auto functions.

## GARBAGE + RECYCLING

You will find:

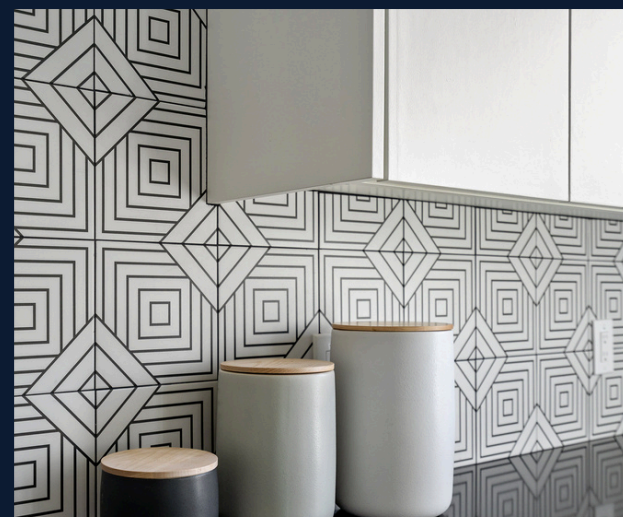
- A stainless trashcan next to the island for garbage.
- A white bin under the kitchen sink for recycling.
- A green trashcan in the garage for organics.

## FOR LONGER STAYS

Trash and recycling pick up is every Tuesday at 9am.

The bins are located in the garage.

# 05



# ELECTRONICS

---

*Instructions in using home equipment and devices.*

## SAMSUNG SMART TV

Turn on the TV and click on the Mode button to get to the HDMI-1 screen. From there you can access Netflix, YouTube etc. Press exit to go back to the main menu.

## NETFLIX

Click on the Netflix button on the remote to access the app. You can use our guest profile on Netflix to watch movies and TV shows. Netflix is already logged in.

A photograph showing a Samsung Smart TV screen displaying a Netflix interface. In the foreground, a black Samsung remote control is visible, with its buttons clearly shown. The text "SDCBarton.com" is overlaid on the image.

SDCBarton.com

# COFFEE & TEA

---

## NESPRESSO COFFEE MAKER

1. Fill the water tank with fresh drinking water (filtered water on the left side of fridge)
2. Turn the machine "ON".
3. Unlock and open the machine head completely.
4. Insert a capsule with the dome shape at the bottom.
5. Close the head and lock the machine by turning the lever left to the lock symbol on the machine head.
6. Place a cup of sufficient capacity under the coffee outlet.
7. Push the top button to start the coffee preparation. Be patient while it is brewing.
8. To stop the coffee flow early, push the top button.

For frothed milk, add a small amount of milk into the Aeroccino and push the start button. It will stop automatically once it is done.

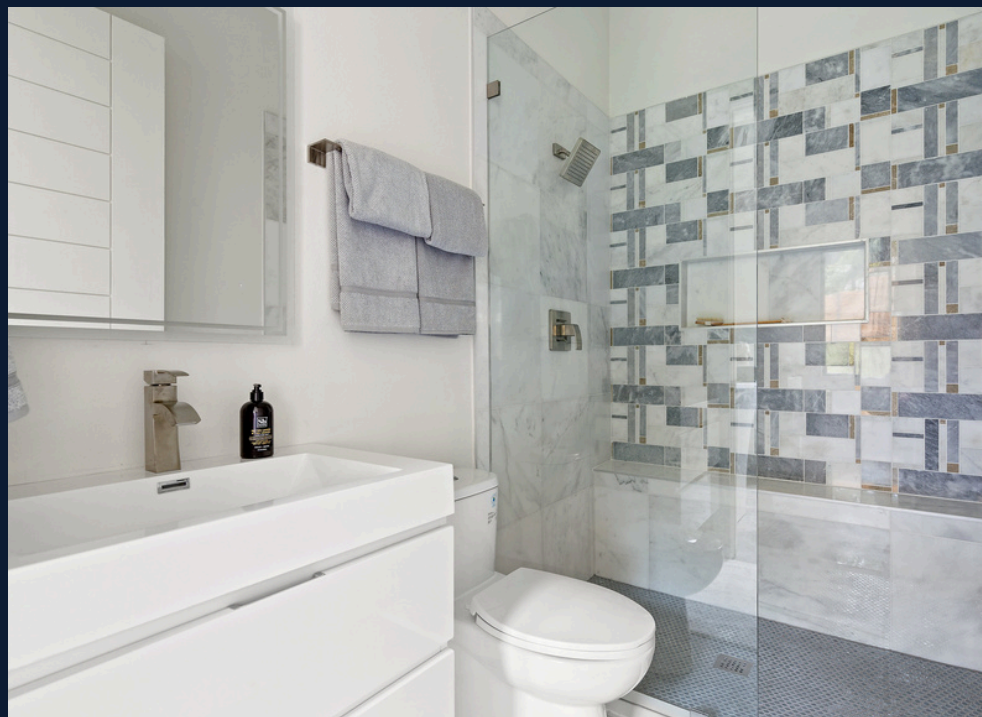




# Forgot something?

We have provided a complimentary basket with toiletries in the bathroom drawer.

There are also luxurious and organic Malie shampoo, conditioner and body wash in every shower.



# LOCATION RECOMMENDATIONS

## 1 RESTAURANTS

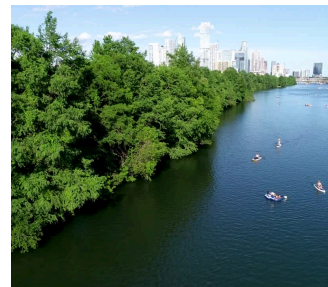
Austin is a vibrant culinary destination. Here are a few of our favorites:

- Uchi/Uchiko – creative sushi – try to get a spot for happy hour.
- Olamaie – charming spot for Southern cuisine.
- Canje – popular new restaurant for modern Caribbean.



## 2 TOWN LAKE and TRAIL

The Town Lake Trail is an iconic urban trail. It offers a scenic and recreational pathway along the shores of Lady Bird Lake. It is great for walking, running, biking, and people-watching. Or, if you want a water adventure try out kayaking or paddle boarding on the lake.



## 3 BARTON SPRINGS

Nestled within Zilker Park, Barton Springs stands as the premier year-round swimming spot in Austin, Texas. It is entirely fed by nearby natural springs, notably including the fourth largest spring in Texas and is always 68 degrees.



## 4 CAFE

A few must-try spots for coffee and breakfast:

- Mozarts
- Bouldin Creek Café
- Better Half Coffee & Bar



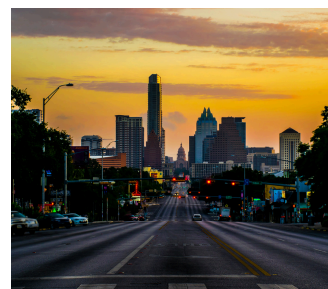
## 5 HIKING TRAILS

The Barton Creek Greenbelt is known for its extensive network of hiking and biking trails. The closest entrance – walk south (turn left) on Barton Hills Drive, , turn right on Homedale and then entrance will be on your left-hand side. (Or check out the Gus Fruh entrance about 1 mile down Barton Hills Drive)



## 6 SHOPPING

South Congress Avenue (SoCo) provides an eclectic mix of stores, boutiques, and vintage shops. The Domain: Located in North Austin, The Domain is an upscale outdoor shopping destination with a mix of high-end and luxury brands.



# GETTING AROUND

---

*Here is a quick run-down of the ways to get around town.*



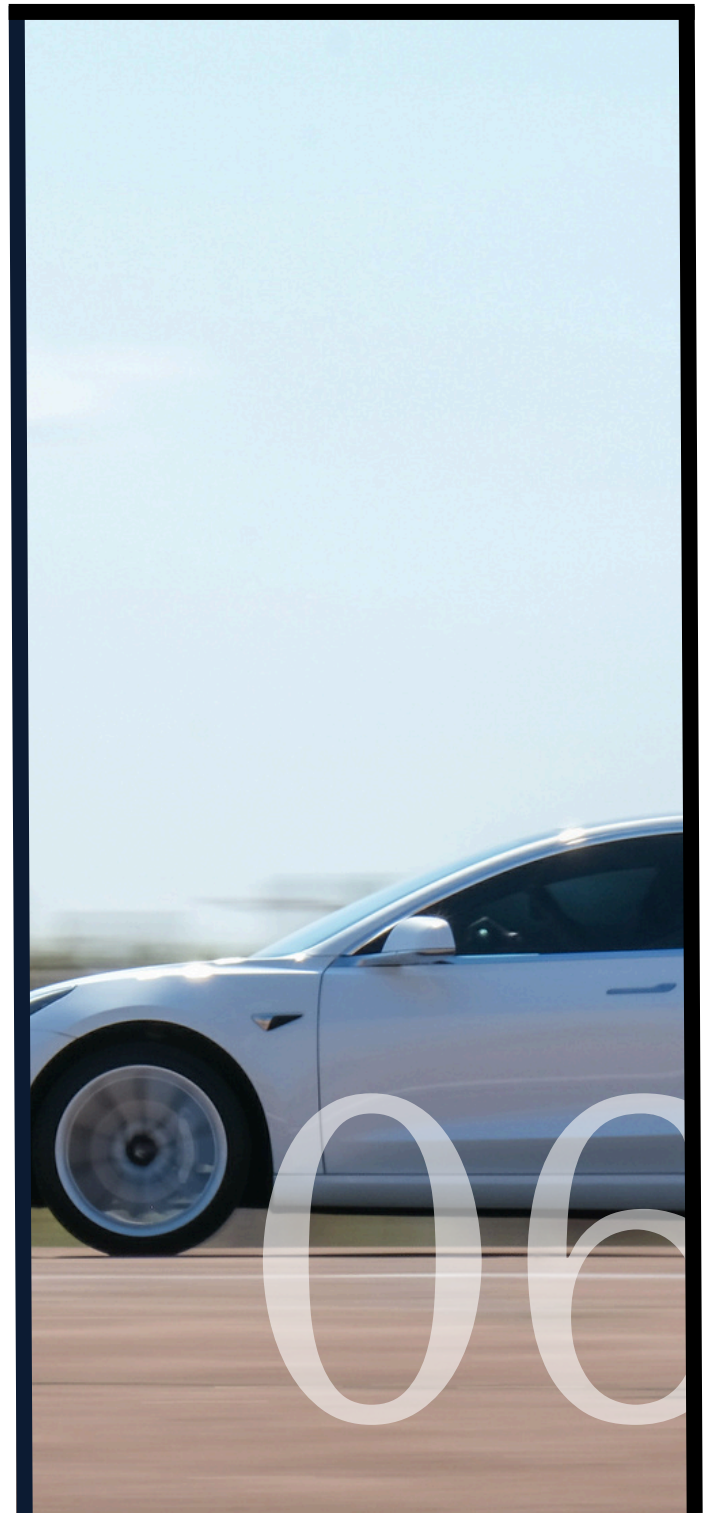
## UBER

Austin has a very robust and well-organized Uber community. Simply download the app and create an account; you can be booking an Uber ride within minutes.

## BIKES

Lime E-Bikes are located all around the city; download the app and create an account to quickly reserve and zip around town on these electric bicycles.

There is also Trek Bicycle store nearby at 517 S Lamar Blvd (512.477.3472) that rents bicycles.





# CHECK-OUT

---

Check out time is at 10AM

We hope you enjoyed your stay with us! If you would like a later check-out time please contact us and we will do our best to accommodate your request.

## LAUNDRY

Please place all used towels in a hamper or on the bathroom floor.

## KEYS

Please lock all of the doors and place the key back in the lock box.



THANK YOU FOR STAYING WITH US!  
SAFE JOURNEY TO YOUR NEXT ADVENTURE!

The  
Barton

Thank you for choosing to stay with us!  
We are thrilled to welcome you back on  
your next booking at The Barton!

We are happy to offer a direct booking  
discount for your next stay.

[www.SDCBarton.com](http://www.SDCBarton.com)



# EMERGENCY

---

*The following are the list of contacts and addresses in case of Emergency.*

## AUSTIN POLICE DEPARTMENT, FIRE & EMS

Call 311 for non-emergency calls and 911 for emergency

## TEXAS POISON NETWORK

If you have a poisoning emergency or question, please call 1-800-222-1222

## FIRST AID KIT

Available in bathrooms and left-most kitchen drawer

## FIRE EXTINGUISHERS

Located in the laundry room, outdoors by the BBQ, and under the kitchen sink

08



**2109 Barton Hills Drive Austin, Texas 78704  
(Corner of Barhill & Barton Hills Drive)**



# WELCOME!

The Barton is located in a vibrant neighborhood in the heart of the Austin.

We hope that you enjoy exploring our great city and enjoy all that it has to offer.

Contact us if you need us -- otherwise, just have a great visit!



## WIFI

Network: 2109 Barton Hills  
Password: runfastswimfast



## ADDRESS

2109 Barton Hills Drive  
Austin, Texas 78704



## HOUSE RULES

- No smoking
- Quiet hours begin at 10pm
- No extra guests



## CHECK-OUT

- Check out is at 10am
- Lock doors on the way out
- Return key to lockbox



## CONTACT

Juliana: 512.699.2389  
Colby: 512.971.1972



## REVIEWS

If you enjoyed your time with us, please leave us a great review. We'd love to hear from you!

